

APPLICATIONS FOR MENTAL HEALTH RESEARCH GRANTS, FELLOWSHIPS AND PhD SCHOLARSHIPS ARE OPEN FOR 2011

Applications are currently open and the application forms can be downloaded from our website www.australianrotaryhealth.org.au

APPLICATIONS FOR PhD SCHOLARSHIPS IN OTHER HEALTH AREAS

Applications are also open for several PhD research scholarships in other health areas – Motor Neurone Disease, Parkinson's Disease, Childhood Cancer, Bowel Cancer, Epilepsy, Melanoma and Infant Limb Deficiency. Application forms for these scholarships can also be found on our website.

MEET THE RESEARCH COMMITTEE OF AUSTRALIAN ROTARY HEALTH

Professor Anthony Jorm is the chairman of the Research Committee Australian Rotary Health and is a Professorial Fellow at ORYGEN Research Centre at the University of Melbourne, Victoria. Tony's current research focuses on public knowledge and beliefs about mental disorders.

Dr Peter Butterworth is based at the Centre for Mental Health Research in The Australian National University in ACT. His research interest focuses on the social consequences and social causes of common mental disorders and psychological distress.

Professor Vaughan Carr is the founding Director of the Priority Research Centre at the University of Newcastle, NSW, the Centre for Brain and Mental Health Research. Professor Carr is the lead chief investigator on a major grant for the establishment of a national schizophrenia research bank.

Professor Stan Catts is Professor of Community Psychiatry, School of Medicine, University of Queensland. Dr Catts played a formative role in the establishment of the Schizophrenia Research Institute in NSW, was Foundation Director of the Schizophrenia Research Unit at Liverpool Hospital, has initiated a number of early psychosis programs, and currently co-chairs the Australian Psychosis Research Network which aims to develop a national program of priority-driven strategic research into schizophrenia and bipolar disorder.

Professor Henry Jackson is in the Department of Psychology at the University of Melbourne. Professor Jackson's expertise is in clinical psychology with regards to youth mental health and severe mental illness, especially in the fields of early psychosis and personality disorders.

Associate Professor David Pierce is a rural GP who works with the School of Rural Health in Victoria and runs a large general practice. Dr Pierce is also a researcher looking at the barriers to clinical behaviour change and the management of depression in primary care.

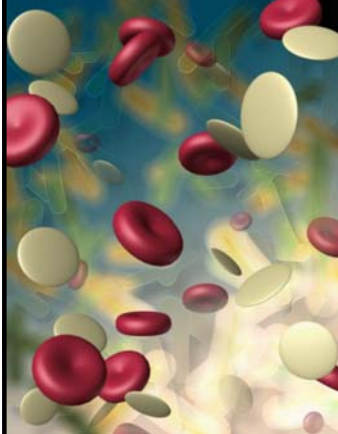
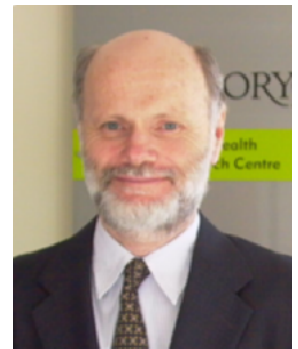
Professor Jane Pirkis is the Director of the Centre for Health Policy, Programs and Economics in the School of Population Health at the University of Melbourne. She has a background in psychology and epidemiology. Professor Pirkis has conducted a number of studies looking at media reporting of suicide and mental health/illness.

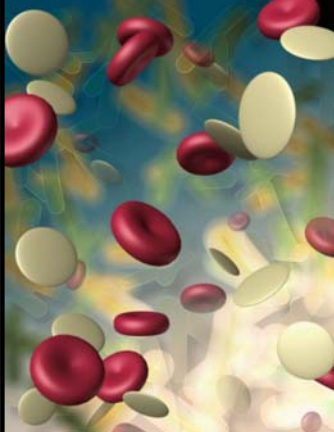
Professor Ron Rapee is the Professor of Psychology at Macquarie University NSW, and his research focuses mostly on anxiety and anxiety disorders in both children and adults. He also has interest in related areas including depression, eating and sexual disorders.

Associate Professor Clare Roberts is Associate Professor of Clinical Psychology and Director of Research and Development in the School of Psychology and Speech Pathology at Curtin University of Technology in WA. Dr Roberts's research focuses on mental health promotion, prevention of clinical disorders, child clinical problems, family and social interventions and developmental disabilities.

Associate Professor Meg Smith is a community psychologist in the School of Social Sciences at the University of Western Sydney, NSW. Dr Smith is a member of the Mental Health Review Tribunal and has been active in the reform of mental health services and policy since the early 1980s when she was diagnosed with bipolar disorder.

Dr Helen Stain is Senior Lecturer in psychiatry with the University of Newcastle's Centre for Rural and Remote Mental Health in Orange, NSW. Dr Stain has responsibility across a number of research themes including population health, environmental adversity (eg drought and farming) and clinical service evaluation.





Ian Scott PhD Scholarships are named after the founder of Australian Rotary Health – PP Ian Laurence Scott. Ian joined Rotary in Alexandra, Victoria in 1973 and served with distinction in many clubs throughout NSW and Victoria. Whilst a member of the Rotary Club of Mornington in Victoria, Ian was inspired to found Australian Rotary Health, in 1981, to identify the cause of Cot Death or Sudden Infant Death Syndrome. Ian served as treasurer on the board and became a life member in November 1989.



Australian Rotary Health Ian Scott PhD Scholarships were introduced in 2000 to honour and recognise Ian's service to Rotary and mankind. Each scholarship is awarded for up to 3 ½ years. These highly prestigious scholarships are awarded to young scientists involved in "Mental Illness" research. Up to 10 scholarships are in progress at one time.

Funding Partner PhD Scholarships are awarded – again for up to 3 ½ years – for researchers involved in any health area. The funding is provided jointly by a Rotary Club or group of Clubs, a Rotary District, a Rotarian or a Corporation along with the university at which the scholar is enrolled, and Australian Rotary Health. Funding Partner Scholarships commenced in 2004 and in 2010 there are 36 Funding Partner Scholars. The instigators of each scholarship are the Funding Partners (Rotary Club etc) and the health area is their choice.

Ian Scott PhD Scholarships 2010 Up to \$28,000 per annum

Karissa Searle

University of Melbourne, VIC

Attention and Mental Health outcomes in extremely low birth weight/very premature infants: An fMRI study of adolescents

Magenta Simmons

University of Melbourne, VIC

Shared decision making for young people with depressive disorders: Development and feasibility testing of a decision aid.

Amy Dawson

University of Wollongong, NSW

Does early developmental disruption make the brain more vulnerable to the effects of cannabis?

Sylvia Kauer

Murdoch Children's Research Institute,
University of Melbourne, VIC

The importance of insight into negative mood, stressful experiences and coping strategies in the prevention and early intervention of adolescent mood disorders.

Allison Milner

Australian Institute for Suicide Research & Prevention/Griffith University, QLD
Suicide in countries of the Western Pacific Region: The impact of globalisation on trends of fatal suicidal behaviour.

Laura Hart

University of Melbourne, VIC

Mental Health First Aid for Eating Disorders: development of first aid guidelines and an intervention for the public.

Esther Chan

Monash University, VIC

Improving the management of acute agitation in the Emergency Department: A multicentre randomised controlled trial.



Left to Right: Karissa Searle, Magenta Simmons, Amy Dawson, Sylvia Kauer, Allison Milner, Laura Hart, Esther Chan

Supporting healthier minds, bodies and communities through research, awareness and education

Funding Partner PhD Scholarships 2010

Up to \$28,000 per annum

NEW SOUTH WALES

Australian Rotary Health/District 9650

Bowel Cancer

Ryan Courtney

University of Newcastle, NSW

Assessing the value and usefulness of a cancer-registry based systematic approach to advising first degree relatives of Colorectal Cancer patients about their risks and need for screening.

Australian Rotary Health/District 9650

Bowel Cancer

Linh Nguyen

Austin Health/University of Melbourne, Vic

Limitations of vascular disrupting agent (VDA) Oxi4503 in treatment of tumours.

Australian Rotary Health/ District 9650

Bowel Cancer

Matthew Thompson

Monash University, Vic

Characterising the role of activating transcription factor 3 in the progression of Colorectal Cancer.

Australian Rotary Health/ District 9640 & 9650

Bowel Cancer

Shuwen Wen

University of Melbourne, Vic

The Renin-Angiotensin System and Kupffer Cells in Colorectal Liver Metastases.

Australian Rotary Health/ District 9640

Bowel Cancer

Shir Lin Koh

University of Melbourne, Vic

The expression and the role of the Renin-Angiotensin System in Liver Regeneration and Tumour Stimulation.

Australian Rotary Health/Rotary District 9680

Rotary Club of Norwest Sunrise

The Suzanne Moss-White Scholarship

Ovarian Cancer

Austin Della-Franca

Westmead Children's Hospital, NSW

Molecular mechanisms underlying cellular transformation by D52 over expression in Ovarian Cancer.

Australian Rotary Health/Rotary District 9680

Rotary Club of Dural

Childhood Leukaemia

Ahmad Ali Aloqaly

University of Technology, NSW

Integrative data mining and visualization of genome-wide SNP profiles in childhood acute Lymphoblastic Leukaemia.

Australian Rotary Health/Rotary District 9680

Rotary Club of Dural

Fred Barbagallo Scholarship

Pancreatic Cancer

Zaklina Kovacevic

University of Sydney, NSW

The Molecular Functions of the Metastasis Suppressor Ndrp -1 and its Potential Role in the Treatment of Cancer.



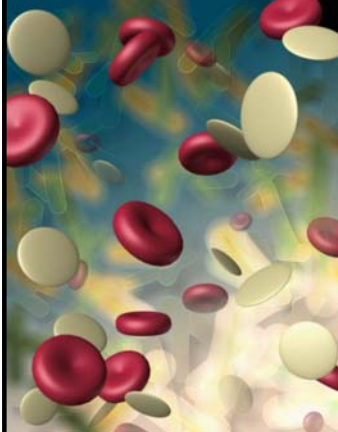
Linh Nguyen



Austin Della-Franca



Zaklina Kovacevic



Funding Partner PhD Scholarships 2010

Up to \$28,000 per annum

NEW SOUTH WALES

Australian Rotary Health/Rotary District 9680

Rotary Club of Dural
Childhood Leukaemia

Ahmad Ali Aloqaly

University of Technology, NSW
Integrative data mining and visualization of genome-wide SNP profiles in childhood acute Lymphoblastic Leukaemia.

Australian Rotary Health/Rotary District 9680

Rotary Club of North Sydney
Ian McNair Scholarship
Brain Tumours

Dan Lu

University of Sydney, NSW
Development of Novel and Selective Anti-Tumour Agents for the Treatment of Brain Cancer.

Australian Rotary Health/Rotary District 9680

Riverside Rotary Clubs
Brain Tumours

Stephen Dowdell

University of Wollongong, NSW
Proton Radiotherapy for Brain Tumours

Australian Rotary Health/Rotary District 9680

Rotary Club of Crows Nest
Patricia Hooton Scholarship
Alzheimer's Disease
Judith Allen-Graham

The Alfred/Monash University, Vic
Inhibition of APP and APLP2 using siRNA to investigate protein function and Alzheimer's Disease.

Australian Rotary Health/Rotary District 9680

The Hooton Family
Mental Health

Daniel Quintana

University of Sydney, NSW
Impact of depression, substance abuse and its treatment using oxytocin: An animal and human research study.

Australian Rotary Health/Rotary District 9680

Rotary Club of Dural/David Henning Memorial Foundation
Breast Cancer

Ellen (Yan Ru) Gao

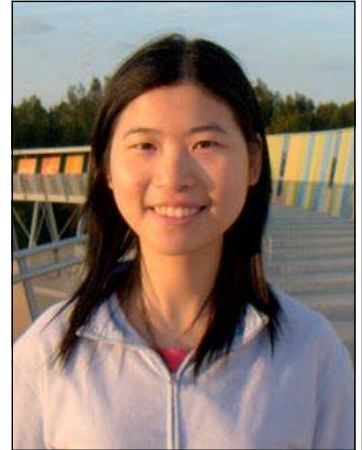
ANZAC Research Institute, NSW
The role of androgen receptor-mediated actions in breast cancer.

Australian Rotary Health/Rotary District 9680

Rotary Clubs of Kellyville, Dural, Kurrajong & Gladesville
The Rodney Tilden, Ted Atkinson, Bob McCallum Kidney Research Scholarship
Kidney Disease

Owen Tang

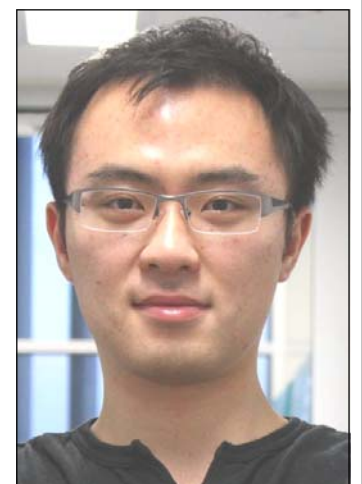
University of Sydney
The molecular role of Kruppel-like transcriptional factors in regulating endothelial activation in diabetic nephropathy.



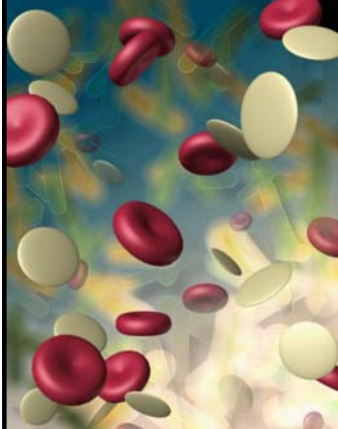
Dan Lu



Stephen Dowdell



Owen Tang



Funding Partner PhD Scholarships 2010

Up to \$28,000 per annum

NEW SOUTH WALES

Australian Rotary Health/Rotary District 9690

Rotary Club of Parramatta City
Youth Suicide

Tonelle Handley

University of Newcastle, NSW

Persistence of depressive symptoms and factors associated with depressive symptoms, across urban, rural and regional communities.

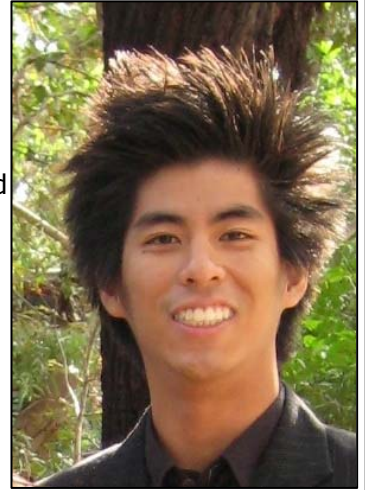
Australian Rotary Health/Rotary District 9690

Rotary Club of Parramatta City
Prostate Cancer

Kevin Jia-Jin Loo

University of Wollongong, NSW

In Body Imaging Brachy View: Improved Brachytherapy of Prostate Cancer Treatment.



Kevin Jia-Jin Loo

Australian Rotary Health/Rotary District 9680

Rotary Club of Glenhaven
The Ron Nichol Dementia Scholarship
Dementia

Marshall Axel Dalton

Prince of Wales Medical Research Centre/University of NSW, NSW

Characterization of episodic memory deficits in frontotemporal dementia and Alzheimer's disease.

Australian Rotary Health/Rotary District 9690

Rotary Club of Parramatta City
Breast Cancer

Elise Jackson

Centenary Institute, NSW

Identification of the mechanisms of hormone-mediated sphingosine kinase activation in Breast Cancer.



Elise Jackson

Australian Rotary Health/Rotary District 9690

Rotary Club of Parramatta City
Heart Disease

Rhian Shephard

Centenary Institute, NSW

Familial cardiomyopathy and severe heart failure caused by multiple gene mutations: from molecular pathogenesis to disease prevention.

Australian Rotary Health/Rotary District 9700

Rotary Club of Orange North
Ian & Jean Simpson

Kristie Munro

University of Wollongong, NSW

Assessment of the importance of the tubulin targeting ability of arsenic compounds for developing arsenic Anti-Leukaemia drugs.



Kristie Munro

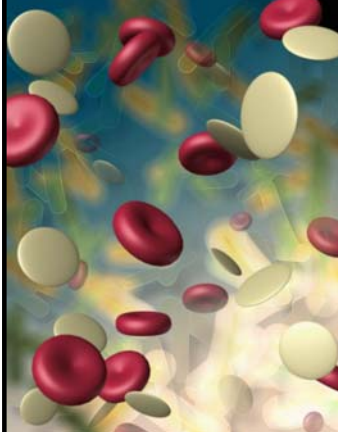
Australian Rotary Health/Rotary District 9700

Rotary Club of Parkes
Spinal Cord Injury

Dianah Rodrigues

University of Sydney, NSW

The influence of neural factors on secondary conditions such as pain and fatigue in persons living with Spinal Cord Injury.



Funding Partner PhD Scholarships 2010

Up to \$28,000 per annum

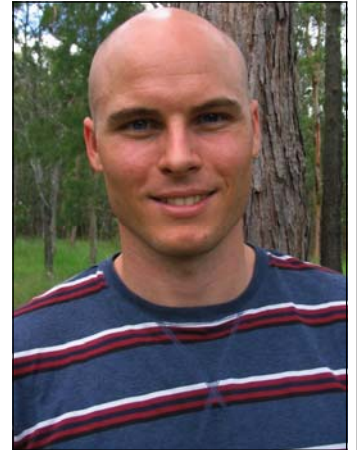
NEW SOUTH WALES

Australian Rotary Health/Rotary District 9690

Rotary Club of Parramatta City
David Henning Memorial Scholarship
Suicide in Men

Luke Balcombe

Australian Institute of Suicide Research & Prevention/
Griffith University Qld
Perceptions & Expectations of one's self: Mental Health and
Suicide in Men.



Luke Balcombe

Australian Rotary Health/Rotary District 9700

Rotary Club of Parkes
Spinal Cord Injury

Charles Lo

University of Sydney
Socioeconomic factors associated with SCI: Function
priorities and determinants such as mood and
perceptions of control.

Australian Rotary Health/Rotary District 9700

Rotary Club of Parkes
Parkinson's Disease

Shoshanah Longmuir

Howard Florey Institute, Vic
Biomarkers in Parkinson's Disease

Australian Rotary Health/Rotary District 9750

Rotary Club of Sydney CBD
Nathan's Bequest Scholarship
Youth Suicide

Kristine Northey

Curtin University, WA
A population based, record-linkage study to elucidate the
effects of child maltreatment on developmental pathways
to mental health, suicidal behaviour and suicide.



Kristine Northey

Australian Rotary Health/Rotary District 9750

Rotary Club of Bondi Junction
Rehab of Spinal Injury

Swee-Ling Toh

University of Sydney, NSW
The use of probiotic therapy to treat multi-resistant
organism (MRO) colonization in people with
Spinal Cord Injury.

VICTORIA

Australian Rotary Health/District 9780

Bowel Cancer

Timothy Smith

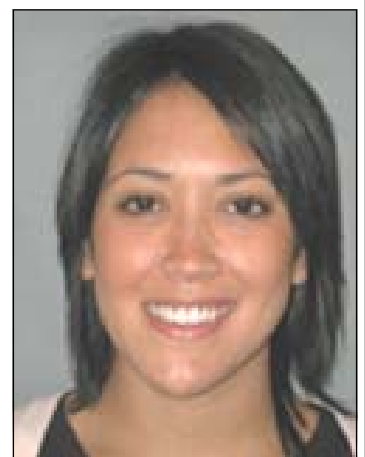
Howard Florey Institute, Vic
Literature mining for published DNA variants of genes
predisposing to Bowel Cancer.

Australian Rotary Health/Rotary District 9790

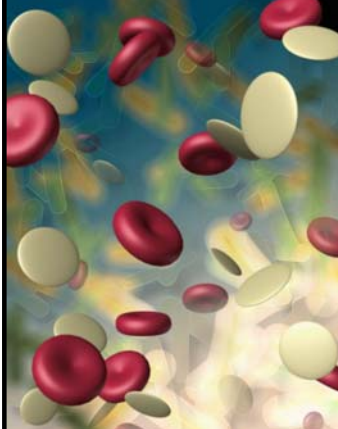
Rotary Club of Strathmore
Bartolina Peluso Scholarship
Dementia

India Bohanna

Howard Florey Institute, Vic
A mouse to man approach to studying early structural &
cognitive changes in pre symptomatic Huntington's
Disease.



India Bohanna



Funding Partner PhD Scholarships 2010

Up to \$28,000 per annum

Australian Rotary Health/Rotary District 9800

Rotary Club of Melbourne South
Gastro Intestinal Cancer

Justine Marum

Murdoch Children's Research Institute, Vic
Developing an assay to determine inherited risks in
Colorectal Cancer for population screening.

QUEENSLAND

Australian Rotary Health/Rotary Districts 9600 9630

Rotary Clubs of Hamilton, Brisbane Highrise
& Stones Corner

Erin Wolfe

University of Queensland, Qld
Bullying, mental health and help seeking in high-school
students: predictors over time and an evaluation of an
intervention designed to address bullying.

Australian Rotary Health/Rotary District 9600

Rotary Club of Samford Valley
D9600 Scholarship in Alzheimer's Disease
Alzheimer's Disease

Crystal Higgs

University of Queensland, Qld
The Role of the Vesicular Glutamate and GABA
Transporters in Alzheimer's Disease.

SOUTH AUSTRALIA

Australian Rotary Health/Hansen Yuncken

Improving the Wellbeing of Young Children

Victoria Leitch

University of Adelaide, SA
Changing the face of Craniostenosis

Australian Rotary Health/Rotary District 9500

Rotary Club of Whyalla
The Fenwick Scholarship
Multiple Sclerosis

Jo Anne Schinke Stratton

University of Melbourne, Vic
Characterising the roles of gp130 receptor and SOCS3
upon neural precursor-mediated remyelination of the
demyelinated central nervous system.

RESEARCH COMPANIONS

Whitcroft Family PhD Scholarship

Research Companion

Mental Health

Jessica Swain

University of Newcastle
Differential diagnosis or comorbidity: Depression and
dementia in community dwelling elderly Australians

Terry Beslich PhD Scholarship

Research Companion

Mental Health

Kelly Baird

Macquarie University
Through the Eyes of the Child: The impact of Parenting
Programs on Vulnerable Young Children



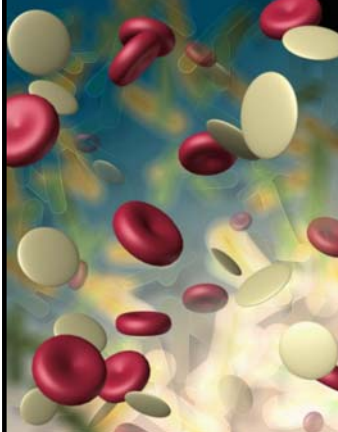
Erin Wolfe



Victoria Leitch



Kelly Baird



PAST FUNDING PARTNER SCHOLARS

Dr Nick Hardcastle, PhD

University of Wollongong, NSW

Years Funded: 2006-2009

PhD Scholarship investigating Prostate Cancer

Letter from Nick Hardcastle:

Modern radiation oncology is constantly improving and becoming more complex. Novel dosimetric planning, delivery and dosimetry techniques have allowed for improved plan quality and confidence in delivery. This thesis is an investigation into the impacts of novel radiotherapy planning and delivery techniques and the efficacy of novel dosimetry methods for modern, complex radiotherapy.

Please accept a copy of my PhD thesis titled *Towards optimal treatment planning and novel dosimetry for cancer patients receiving intensity modulated radiotherapy*. This has been marked and received a commendation by both thesis examiners.

I would like to thank Australian Rotary Health and Rotary District 9650 for the funding I have received during my PhD. I am greatly appreciative for this funding opportunity as it allowed me to pursue research in a rapidly advancing field of medicine. I have thoroughly enjoyed my studies as they have proved to be both personally and professionally rewarding.

The next step for me is a two year post-doctoral position at the Department of Human Oncology at the University of Wisconsin-Madison, USA. I will be continuing my research into prostate cancer radiotherapy, focusing on advanced image guideline techniques.

Thank you again for your support,

Dr Nick Hardcastle



Australian
Rotary
Health



SCHOLARSHIPS
CURRENTLY ADVERTISED

Australian Rotary Health/Neville & Jeanne York

Research Companion PhD Scholarship investigating Motor Neuron Disease (Australia wide)

Australian Rotary Health/ Rotary Club of Parkes

PhD Scholarship investigating Parkinson's Disease (NSW)

Australian Rotary Health/ Rotary Club of Adelaide

PhD Scholarship investigating Childhood Cancer (Australia wide)

Australian Rotary Health/ Rotary District 9640

PhD Scholarship investigating Bowel Cancer (Australia wide)

Australian Rotary Health/ Rotary Club of Koo Wee Rup/Lang Lang

PhD Scholarship investigating Epilepsy (Australia wide)

Australian Rotary Health/ Rotary Club of Wollundry-Wagga Wagga

PhD Scholarship investigating Melanoma (Australia wide)

Australian Rotary Health/ Rotary Club of Bendigo South

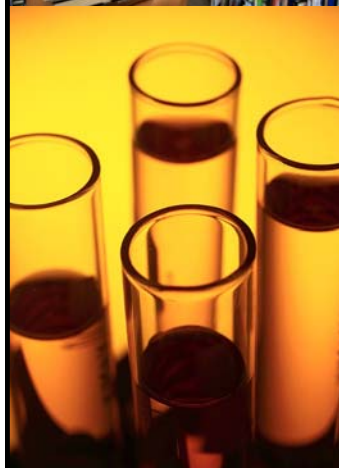
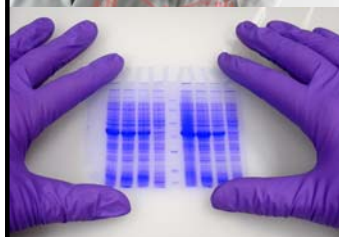
PhD Scholarship investigating Motor Neuron Disease (Victoria)

Australian Rotary Health/ Rotary Club of Prospect

PhD Scholarship investigating Infant Limb Deficiency (Australia wide)

Australian Rotary Health Geoff Bailey

PhD Scholarship investigating any health area (Previous Indigenous Health Scholar)



PAST IAN SCOTT PhD SCHOLARS

Dr Felice Jacka, PhD

*Department of Clinical and Biomedical Science:
Barwon Health, University of Melbourne*

Ian Scott Scholar: 2005-2008

Project Title: The association between depressive and anxiety disorders and nutrition: Are we what we eat?



The dietary habits of people within industrialized nations have changed considerably in the last 20 years, and these changes have been accompanied by an increase in the burden of chronic, non-communicable diseases. There is an emerging understanding that depressive illness is influenced by whole body systems such as the immune and endocrine systems, as well as by biochemical, genetic, and neurodegenerative factors. These systems and factors are, in turn, modulated by diet. There is emerging evidence of a role for diet and nutrition in depressive illness, however previous research in this field has focused on individual nutrients such as folate and fatty acids. This study investigated the association between habitual diet and the high prevalence mental disorders in a randomly selected community sample of women.

The study sample comprised 1007 women, aged 20-93 years, participating in an ongoing epidemiological study in south-eastern Australia. Each participant completed a validated food frequency questionnaire (FFQ), in addition to a range of other medical and lifestyle assessments. Participants also completed the General Health Questionnaire (GHQ-12), and a semi-structured clinical review (SCID-I/NP) was administered to determine current and lifetime depressive and anxiety disorders. A diet quality score (DQS), based on national dietary guidelines, was derived from the FFQ, and a factor analysis was performed to identify habitual dietary patterns. Habitual consumption of food groups, lipids and nutrients was also determined from the FFQ.

After adjustment for age, body mass index, socioeconomic status, education, physical activity, smoking, alcohol consumption and energy, there was a significant inverse association between z-score standardized DQS and GHQ-12 scores ($b = -0.10$, 95%CI = -0.17 to -0.04). DQS was also inversely related to current MDD/Dysthymia (OR=0.72, 95%CI 0.54 to 0.98) after adjustments, but not to other mental health outcomes. A prudent dietary pattern was associated with a reduced likelihood of both current (OR=0.60, 95%CI 0.44 to 0.80) and lifetime (OR=0.81, 95%CI 0.66 to 0.99) psychopathology (depressive and/or anxiety disorders); current MDD/Dysthymia (OR=0.53, 95%CI 0.33 to 0.83); and both current (OR=0.62, 95%CI 0.42 to 0.91) and lifetime anxiety disorders (OR=0.73, 95%CI 0.55 to 0.97). There was also a trend towards a decreased likelihood of lifetime MDD for those with higher prudent pattern scores (OR=0.80, 95%CI 0.64 to 1.01).

A western dietary pattern was associated with increased GHQ-12 scores ($b = 0.14$, 95%CI 0.04 to 0.25), while a vegetarian dietary pattern was associated with an increased likelihood of current MDD/Dysthymia (OR=1.39, 95%CI 1.03 to 1.88). An increased consumption of red meat, wholegrain foods, fish, vegetables, cholesterol, magnesium and zinc were all associated with reduced depressive symptoms and/or a reduced likelihood of psychopathology, while increased consumption of sweets and caffeine were both associated with increased depressive symptoms and/or an increased likelihood of psychopathology.

This study is the first to undertake a structured examination of the association between the whole diet and the common mental disorders, and the results support the hypothesis that habitual diet is related to depressive and anxiety disorders. Further studies are required to elucidate the role of nutrition in the aetiology of these illnesses.

Supporting healthier minds, bodies and communities through research, awareness and education

